

8

Hillview Court
Dunfermline
Fife
KY12 0WP



Working harder for you

maloco+
associates 
solicitors + estate agents

WHAT IS IT?

- A large detached villa with a large low maintenance rear garden
- Immaculately presented and set within a quiet residential cul-de-sac
- Close proximity to the M90 motorway, ideal for the commuter
- Electric central heating and double glazing
- Rec hall, full length bay window lounge, dining room and sun room
- Integrated breakfast kitchen, utility, w/c
- 4 double bedrooms with master en suite shower room
- Family bathroom
- EPC Rating: E, Council Tax: G

8 Hillview Court is a large, modern detached Taylor Wimpey villa set within a private residential cul-de-sac to east of Dunfermline town centre with excellent access to the M90 motorway. The property offers an alternative location to those in the eastern expansion set within a more tranquil setting.

With a double garage and monoblock drive the property has an enclosed rear garden mainly laid to lawn as well as a raised south facing decked area. There is an electric central heating system and double glazing as well as a property management company that oversee the up keep of the common areas within the development.

This is a beautifully maintained family home with neutral decoration throughout. A viewing will confirm the convenient location and semi-rural aspects on offer.



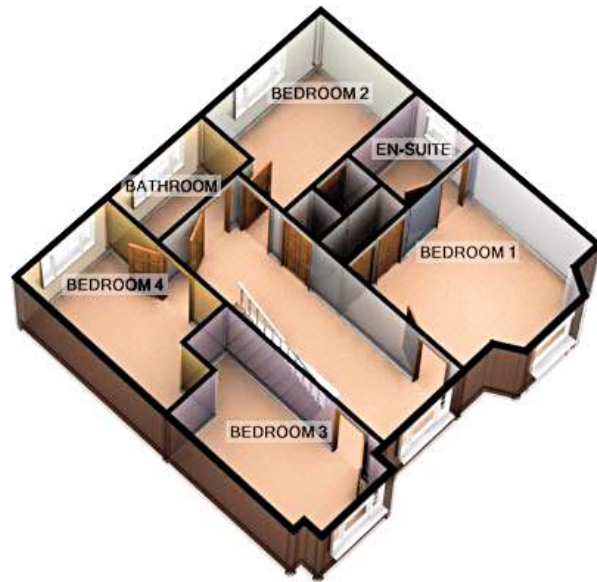
Details of price and viewings are available on our website: www.maloco.co.uk











ROOM	IMPERIAL	METRIC
Lounge (inc bay window)	(18'4" x 13'0")	(5.58m x 3.97m)
Dining Room	(13'1" x 9'1")	(3.98m x 2.76m)
Sun Room	(16'8" x 10'4")	(5.07m x 3.16m)
Kitchen (at widest point)	(11'6" x 11'5")	(3.49m x 3.49m)
Utility Room	(8'2" x 9'4")	(2.50m x 2.85m)
WC	(5'3" x 3'7")	(1.60m x 1.09m)
Bedroom 1 (inc bay window)	(13'4" x 12'11")	(4.06m x 3.94m)
En-Suite (inc shower)	(7'0" x 5'1")	(2.12m x 1.56m)
Bedroom 2	(13'2" x 9'10")	(4.01m x 3.00m)
Bedroom 3	(11'0" x 8'8")	(3.35m x 2.64m)
Bedroom 4	(9'6" x 8'7")	(2.91m x 2.63m)
Bathroom	(7'8" x 6'3")	(2.35m x 1.91m)

6/8 Bonnar Street

Dunfermline KY12 7JR

T: 01383 629720

F: 01383 621333, LP.32.

www.maloco.co.uk



Working harder for you