

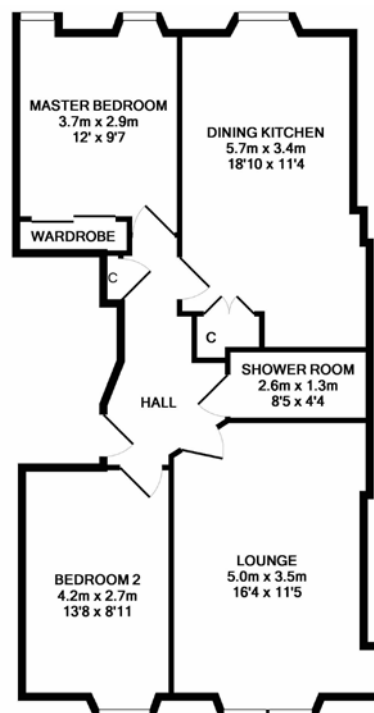
1F1 13 Royal Park Terrace, Edinburgh, EH8 8JB



For Sale

Spacious and well presented 1st floor flat, forming part of a traditional tenement, with stunning outlook across Holyrood Park. Hallway, twin window lounge with living flame gas fire and panoramic view over Holyrood Park, dining kitchen with built in appliances, 2 good sized double bedrooms and luxuriously refitted shower room. Gas central heating and double glazing. Secure entry phone system. Shared garden to rear and on street parking to front.





Measurements are approximate. Not to scale. Illustrative purposes only
Made with Metropix ©2018

Royal Park Terrace lies just over 1.5 miles East of Princes Street and is therefore ideally placed for city centre living with a regular bus service available a few hundred yards away. Within the immediate vicinity there is a plethora of amenities to meet every day needs including schools at both Primary and Secondary levels, Sainsbury's supermarket and Meadowbank Retail park which houses a number of major retailers. A short distance away is the Omni Centre which has a multi-screen cinema complex and Nuffield Health club with adjacent Holyrood Park providing 640 acres of dramatic parkland within the heart of the capital.

Energy Performance Rating - C

Viewing

Open viewings Sunday 2-4pm [REDACTED]

