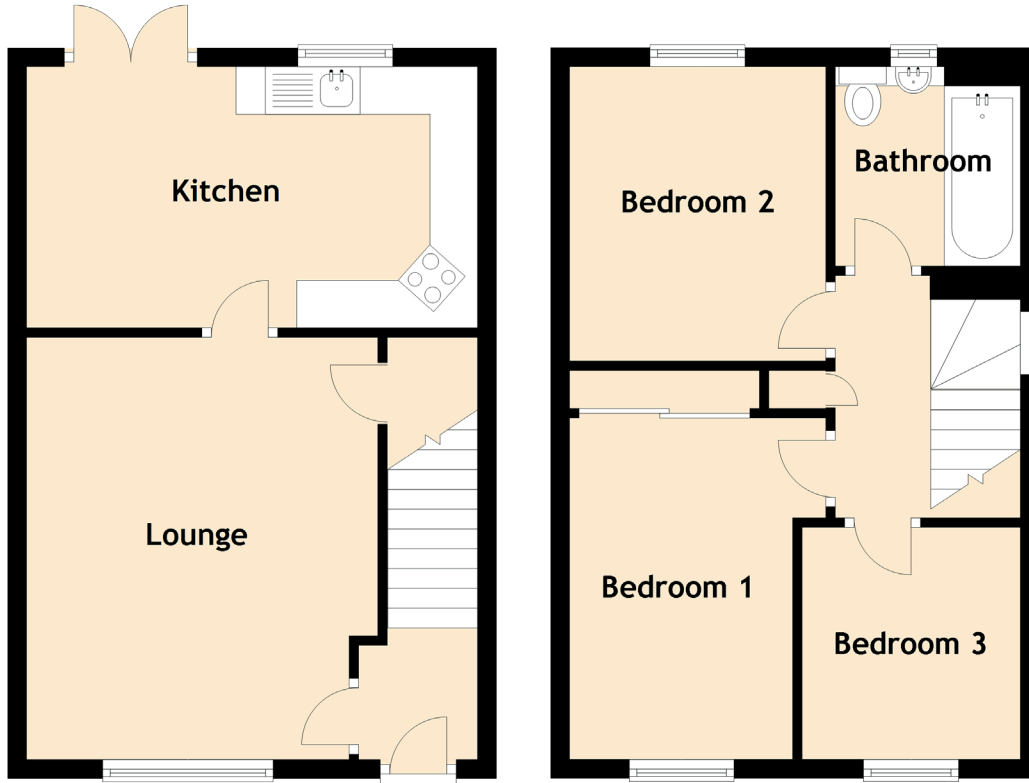


16 Grange Park

DUNFERMLINE, KY11 8QQ



Approximate Dimensions (Taken from the widest point)

Lounge	4.45m (14'7") x 3.70m (12'2")
Kitchen	4.75m (15'7") x 2.75m (9')
Bedroom 1	3.60m (11'10") x 2.70m (8'10")
Bedroom 2	3.10m (10'2") x 2.70m (8'10")
Bedroom 3	2.45m (8') x 2.30m (7'7")
Bathroom	2.10m (6'11") x 2.00m (6'7")