

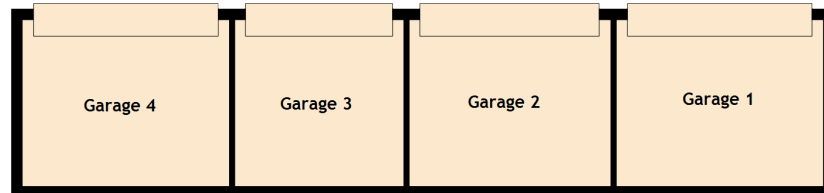
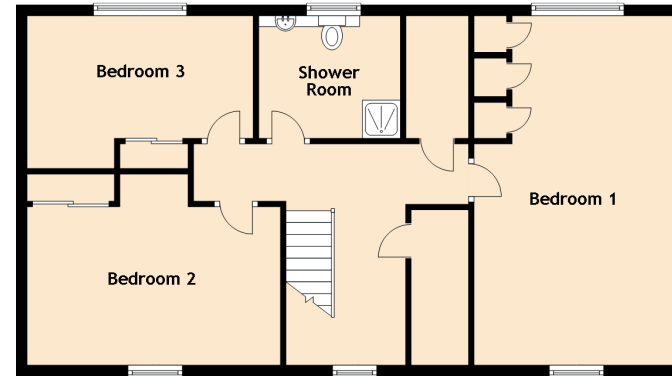
# Touch Mill Cottage

HALBEATH ROAD, DUNFERMLINE, FIFE, KY11 4LF

Ground Floor



First Floor



Approximate Dimensions (Taken from the widest point)

Ground Floor	
Sun Room	4.10m (13'5") x 3.00m (9'10")
Lounge	5.00m (16'5") x 4.65m (15'3")
Kitchen	6.45m (21'2") x 4.00m (13'2")
Utility	2.90m (9'6") x 2.10m (6'11")
Garden Room	5.00m (16'5") x 3.15m (10'4")
Dining Room	4.60m (15'1") x 3.30m (10'10")
Bedroom 4	4.00m (13'1") x 3.50m (11'6")
Bathroom	2.90m (9'6") x 2.10m (6'11")
First Floor	
Bedroom 1	6.40m (21') x 3.80m (12'6")
Bedroom 2	4.50m (14'9") x 3.50m (11'6")
Bedroom 3	4.15m (13'7") x 2.90m (9'6")
Shower Room	2.60m (8'6") x 2.25m (7'4")
Summer House	6.40m (21') x 3.90m (12'10")
Garage 1	3.80m (12'6") x 3.05m (10')
Garage 2	3.70m (12'2") x 3.05m (10')
Garage 3	3.10m (10'2") x 3.05m (10')
Garage 4	3.80m (12'6") x 3.05m (10')