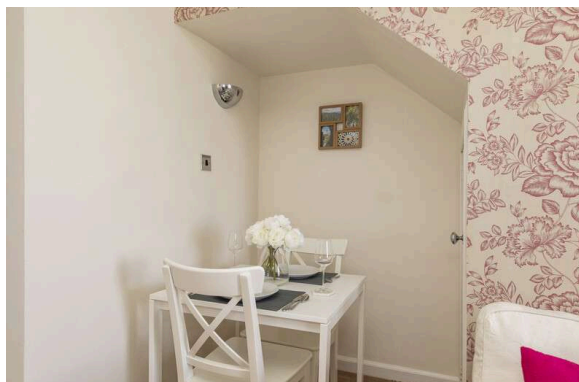




20 Fair-A-Far Cottages, Whitehouse Road
CRAMOND | EDINBURGH | EH4 6PQ


warners
solicitors & estate agents



20 Fair-A-Far Cottages, Whitehouse Road, Cramond

CRAMOND | EDINBURGH | EH4 6PQ

Set in the highly regarded and historic area of Cramond moments from the beach is this immaculately presented double upper main door apartment with private garden and panoramic views.

The accommodation comprises welcoming entrance hallway, spacious lounge with feature fireplace and ample dining space and working shutters, modern breakfasting kitchen with attractive units, stylish bathroom with shower over bath and following up an elegant staircase the upper level boasts a bright bedroom with three feature windows with secondary glazing and plenty of storage cupboards. Further benefits include sash and case windows throughout, an external store, shared communal grounds, gas central heating and on street parking. Early viewing is essential to fully appreciate the stunning interiors and tranquil, yet well-connected location.

- Traditional double upper apartment
- Private garden
- Spacious lounge
- Contemporary kitchen
- Stylish bathroom
- Bright bedroom
- Gas central heating
- Communal garden
- Free on street parking

Extras - all floor coverings, fridge/freezer and washing machine, kitchen blinds and bedroom curtains.

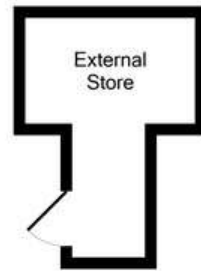
PRICE & VIEWING: Please refer to our website, www.warnersllp.com or call us on 0131 667 0232.



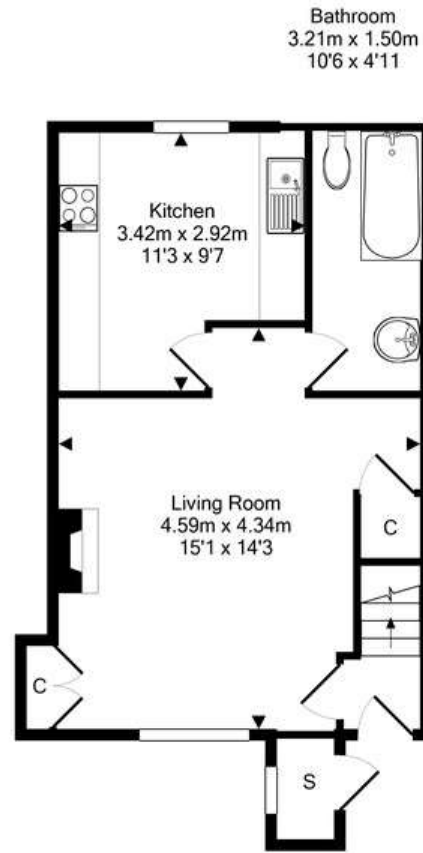
Once a small fishing village at the mouth of the River Almond on the shores of the Firth of Forth, Cramond has a history dating back to the Bronze Age and Roman times. The area boasts the city's finest walk along the waterfront with its own beach. There is an excellent array of shopping facilities located at Davidson's Mains, the Gyle and Craighleith Retail Park, offering specialist shops including Sainsbury and Marks & Spencer stores.

In addition, there is easy access to the M8/M9, M90, Queensferry Crossing and Edinburgh Airport.

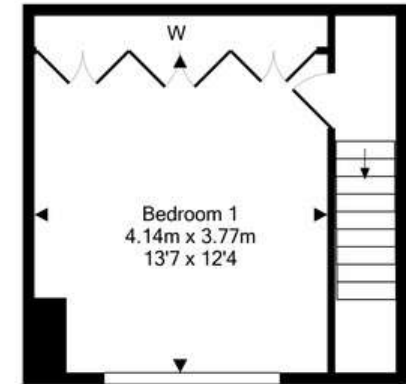




External Store



Ground Floor



1st Floor

For details of the total internal floor area, please refer to the property's Home Report. This plan is for illustrative purposes only and should be used as such by a prospective purchaser.
Made with Metropix ©2021