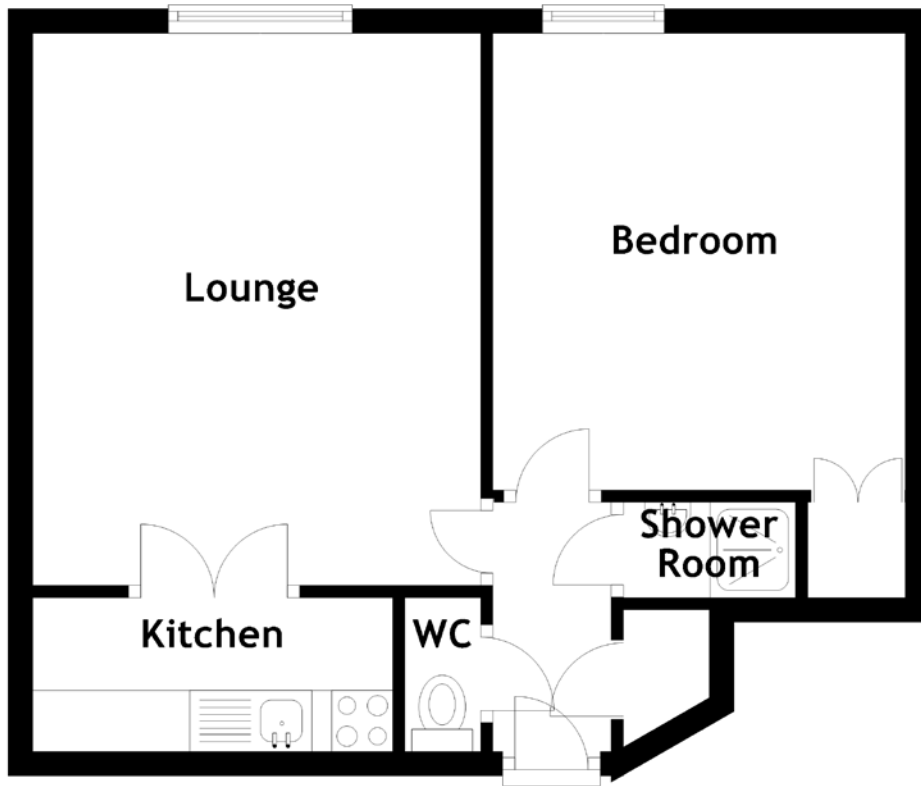


FLOOR PLAN, DIMENSIONS & MAP



Approximate Dimensions (Taken from the widest point)

Lounge 4.52m (14'10") x 3.67m (12')
Kitchen 2.95m (9'8") x 1.26m (4'2")
Bedroom 3.74m (12'3") x 3.38m (11'1")

Shower Room
WC

1.41m (4'8") x 0.78m (2'7")
1.26m (4'2") x 0.76m (2'6")

Gross internal floor area (m²): 41m²
EPC Rating: D

