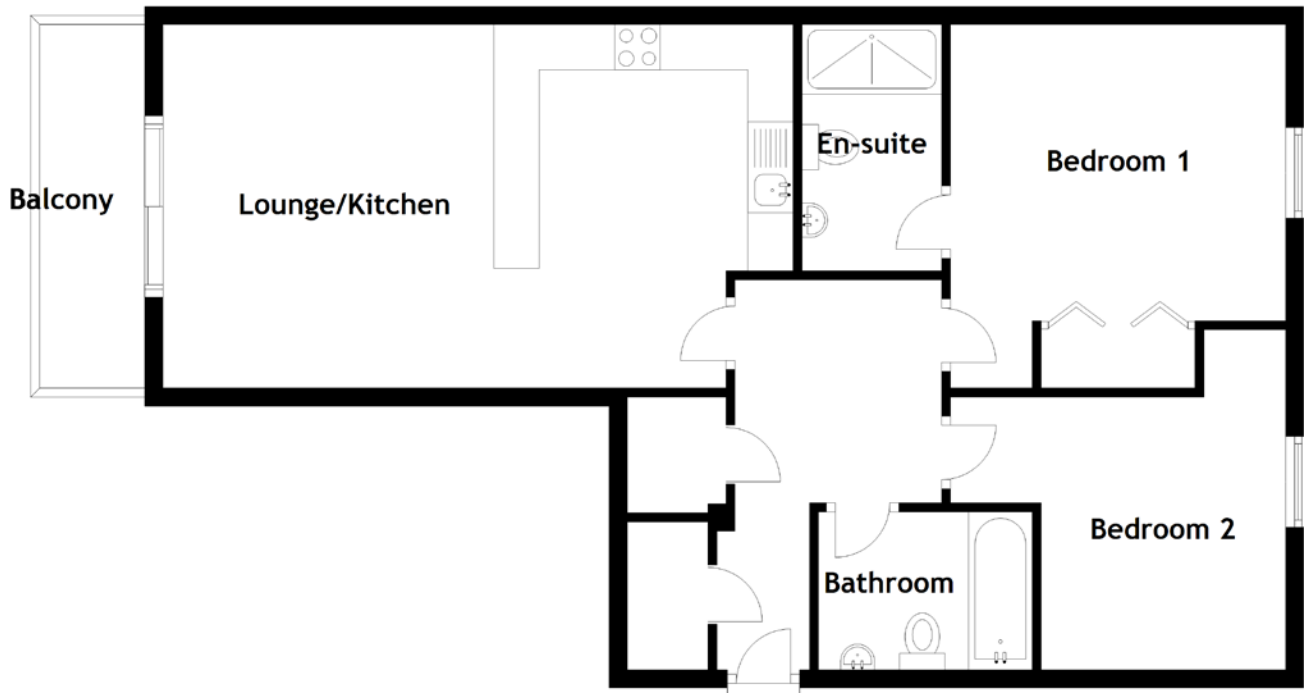


# FLOOR PLAN, DIMENSIONS & MAP



Approximate Dimensions  
(Taken from the widest point)

Lounge/Kitchen 6.22m (20'5") x 4.01m (13'2")  
Balcony 4.01m (13'2") x 1.26m (4'2")  
Bedroom 1 3.96m (13') x 3.70m (12'2")

En-suite 2.72m (8'11") x 1.54m (5'1")  
Bedroom 2 3.75m (12'4") x 3.70m (12'2")  
Bathroom 2.36m (7'9") x 1.74m (5'9")

Gross internal floor area (m<sup>2</sup>): 72m<sup>2</sup>  
EPC Rating: B

