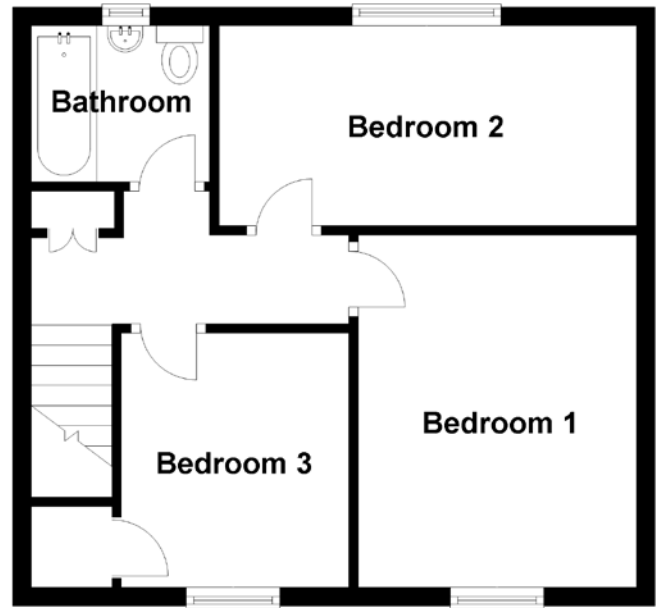
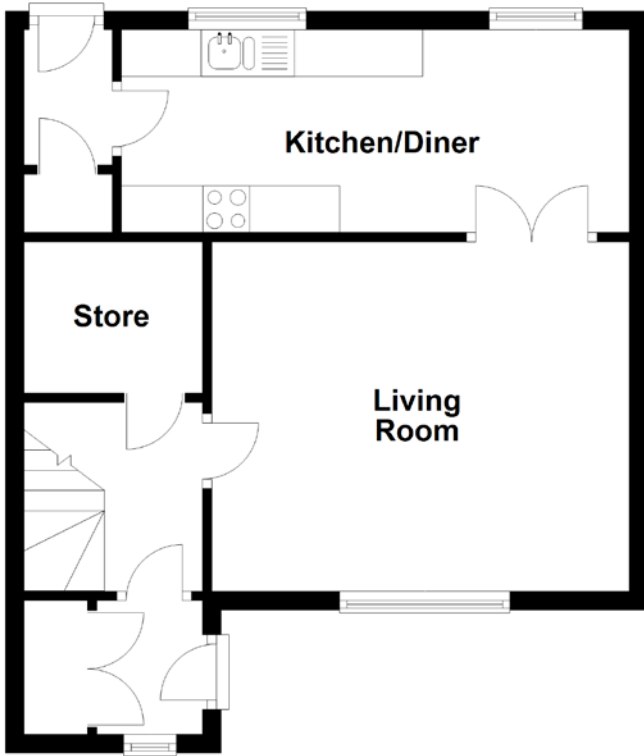


FLOOR PLAN, DIMENSIONS & MAP



Approximate Dimensions
(Taken from the widest point)

Living Room 4.47m (14'8") x 3.74m (12'3")
Kitchen/Diner 5.44m (17'10") x 2.17m (7'1")
Bathroom 1.97m (6'6") x 1.67m (5'6")

Bedroom 1 3.77m (12'4") x 2.98m (9'9")
Bedroom 2 4.47m (14'8") x 2.14m (7')
Bedroom 3 2.72m (8'11") x 2.40m (7'10")

Gross internal floor area (m²): 86m²
EPC Rating: C

