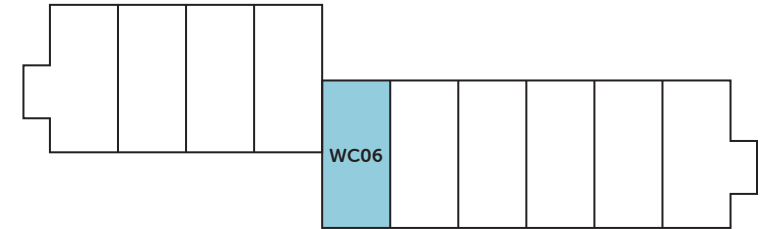
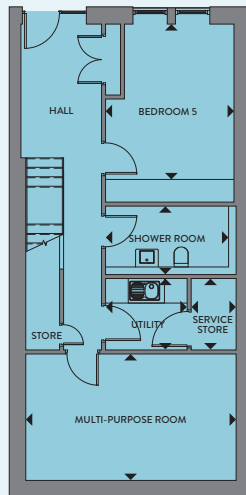


West Craig

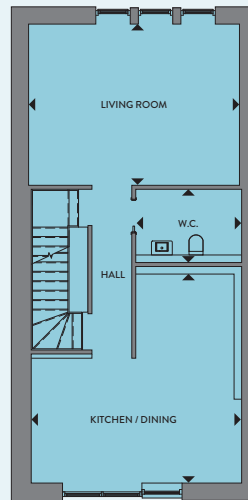
Plot WC06



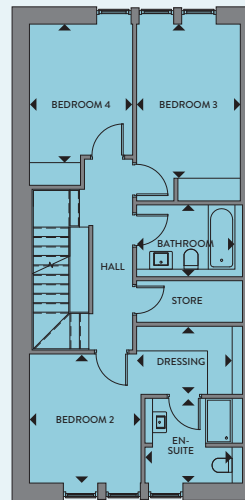
GROUND FLOOR



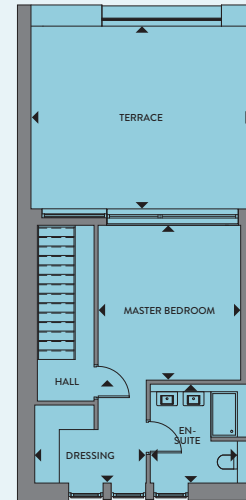
FIRST FLOOR



SECOND FLOOR



THIRD FLOOR



GROUND FLOOR

Multi-Purpose Room	3340 x 5510mm	10ft 11" x 18ft
Utility	1880 x 2160mm	6ft 2" x 7ft 1"
Bedroom 5	3380 x 4110mm	11ft 1" x 13ft 5"
Shower Room	1810 x 3250mm	5ft 11" x 10ft 7"

FIRST FLOOR

Kitchen / Dining	5510 x 5530mm	18ft x 18ft 1"
Living Room	4260 x 5580mm	13ft 11" x 18ft 3"
W.C.	1940 x 2800mm	6ft 4" x 9ft 2"

SECOND FLOOR

Bedroom 2	2950 x 3410mm	9ft 8" x 11ft 2"
En-suite	2240 x 2300mm	7ft 4" x 7ft 6"
Dressing	1800 x 2530mm	5ft 10" x 8ft 3"
Bedroom 3	2740 x 4080mm	8ft 11" x 13ft 4"
Bedroom 4	2730 x 3660mm	8ft 11" x 12ft
Bathroom	1900 x 2600mm	6ft 2" x 8ft 6"

THIRD FLOOR

Master Bedroom	3770 x 4100mm	12ft 4" x 13ft 5"
Dressing	2060 x 2950mm	6ft 9" x 9ft 8"
En-suite	2300 x 2620mm	7ft 6" x 8ft 7"
Terrace	4810 x 5640mm	15ft 10" x 18ft 6"