



Semi-Detached Bungalow

35 Skelmorlie Place, Kilwinning, KA13 6SH



taylorandhenderson.co.uk

1		2		1		D	EPC rating
---	--	---	--	---	--	---	----------------------

35 Skelmorlie Place

Taylor and Henderson are delighted to bring to the market this semi detached patio bungalow located within easy walking distance to all local amenities. The spacious accommodation on offer comprises spacious Entrance Hallway with door to the garden, Lounge with patio door opening to the garden, Dining Room/Bedroom 3, Modern fitted Kitchen, 2 Double Bedrooms both with handbasins & Wet Room. The property benefits from Gas Central Heating, Double Glazing & Generous Storage. The garden is paved with some chips and a selection of mature shrubs. Kilwinning offers an array of local amenities to include primary and secondary schools, bus routes, local shops. It is also within easy access of road and rail links to Glasgow in the north, all west coast towns train including Ayr to the south and thus is well located for travel throughout west central Scotland. Internal viewing highly recommended

Hall	
Lounge	18'4 x 13'4
Dining Room	13'4 x 7'5
Kitchen	11'4 x 8'3
Wet Room	10'2 x 5'4
Bedroom 1	13'3 x 10'5
Bedroom 2	12'5 x 8'2

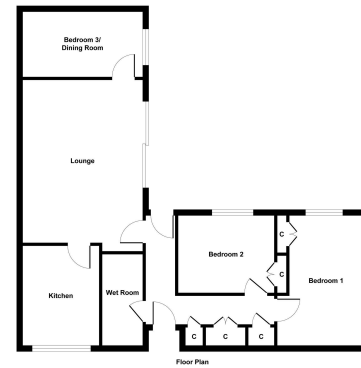
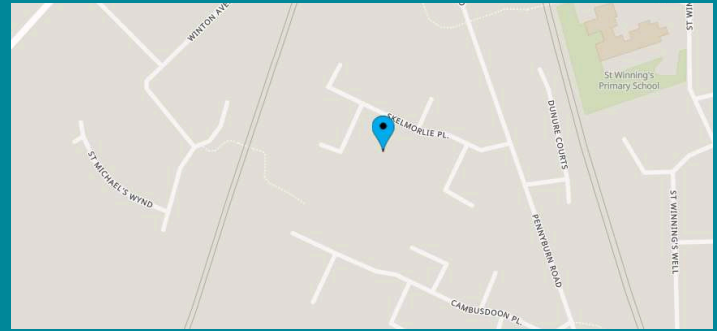


Illustration for identification purposes only, measurements are approximate, not to scale.
Prepared by Emerald Property

Viewing
Through solicitors on 01294 606700

Email
property@taylorandhenderson.co.uk

Reference E479051