



# Terraced House

183 Dickson Drive, Irvine, KA12 9AJ



[taylorandhenderson.co.uk](http://taylorandhenderson.co.uk)

2		3		1		C	<b>EPC</b> rating
---	--	---	--	---	--	---	----------------------





# 183 Dickson Drive

Taylor & Henderson are delighted to bring to the market this mid terraced villa located within residential area close to local amenities.

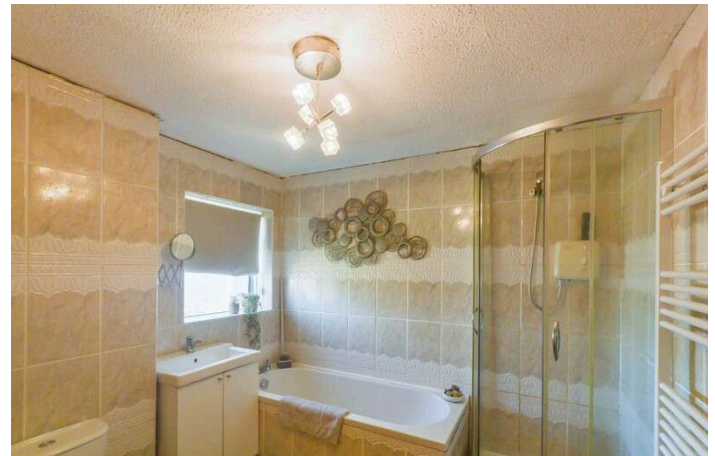
The family accommodation comprises spacious entrance porch and hallway, breakfasting kitchen, lounge with patio doors out to the sun room on the ground floor. Upstairs boasts 2 double bedrooms, single bedroom and 4 piece bathroom. The property benefits from gas central heating and double glazing.

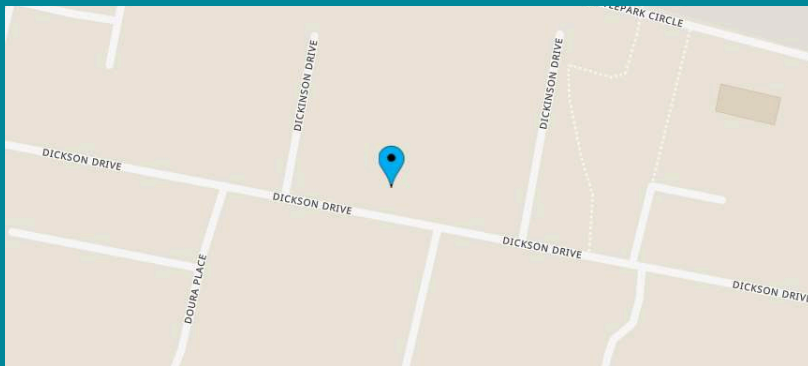
The front garden is paved with a driveway. There is a close leading to the rear garden which is laid in paving, decorative chips and lawn, there is a timber shed.

Irvine offers a range of local amenities including beach, local shops, supermarket, restaurants, schooling at primary and secondary levels, train station and bus services and offers good road and rail links to Glasgow, neighbouring Ayrshire towns and the M8 motorway network, thus providing ease of travel throughout West Central Scotland.

## Measurements

Entrance Porch	10'2 x 6'5
Lounge	12'7 x 11'1
Breakfasting Kitchen	12'7 x 11'1
Bedroom 1	14' x 9'4
Bedroom 2	12'4 x 9'4
Bedroom 3	8'9 x 7'9
Bathroom	9'3 x 7'3
Conservatory	14'4 x 7'7

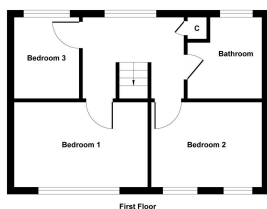




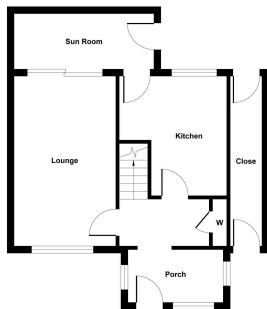
Viewing  
Through solicitors on 01294 606700

Email  
property@taylorandhenderson.co.uk

Reference  
E483896



First Floor



Ground Floor

Illustration for identification purposes only. Measurements are approximate, not to scale.  
Produced by Elements Property

## Our Offices

51 Hamilton Street, Saltcoats, Ayrshire, KA21 5DX  
Tel: 01294 606700 & Fax: 01294 464827

22 Bank Street, Irvine, Ayrshire, KA12 0AG  
Tel: 01294 278306 & Fax: 01294 272886

83 Main Street, Kilwinning, Ayrshire, KA13 6AN  
Tel: 01294 557506 & Fax: 01294 558552  
Email: property@taylorandhenderson.co.uk

espc rightmove  zoopla  OnTheMarket



DISCLAIMER: Whilst we endeavour to make these particulars as accurate as possible, they do not form part of any contract of offer, nor are they guaranteed. Measurements are approximate and in most cases are taken with a digital/sonic-measuring device and are taken to the widest point. We have not tested the electricity, gas or water services or any appliances. Photographs are reproduced for general information and it must not be inferred that any item is included for sale with the property. If there is any part of this that you find misleading or simply wish clarification on any point, please contact our office immediately when we will endeavour to assist you in any way possible.