





Key Features

 2 Bedrooms

 1 Public

 1 Bathroom

- A two bedroom, upper flat located within close proximity of Dunfermline's city centre
- In need of upgrade, the home would make for a perfect first time home or investment property
- Dunfermline offers a range of amenities including shops, supermarket, restaurants and bars that can all be reached on foot.
- Fantastic transport links via nearby Dunfermline Train and Bus Stations with further links available at Halbeath and Inverkeithing Park and Ride, as well as the M90 motorway circa 2 miles from the property
- Main door entry with stairs leading to the upper floor
- Living room and kitchen with a range of storage options
- Family bathroom with three piece suite and electric shower over the bath
- Two bedrooms with built in storage available within bedroom one
- Private parking and drying green
- EPC Rating – D
- Council Tax Band - B



Location

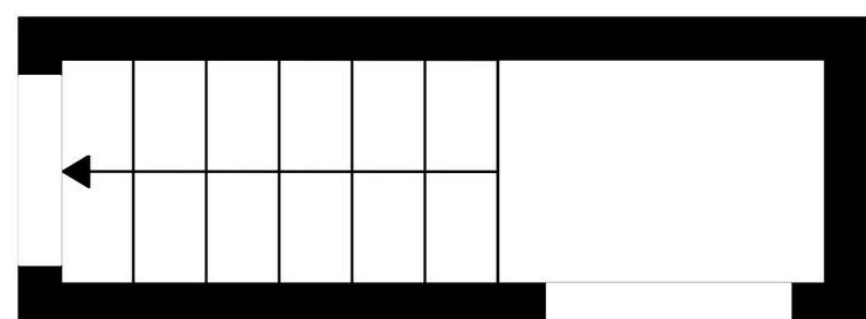
Nestled in the heart of Fife, Dunfermline seamlessly blends rich history with modern living, making it an ideal place to call home. As Scotland's ancient capital, it offers a wealth of cultural landmarks, including the stunning Dunfermline Abbey and Pittencrieff Park—perfect for leisurely strolls and family outings.

The city boasts excellent amenities, from a variety of high-street shops and independent boutiques to top-rated schools and a variety of leisure facilities. A wide range of restaurants, cafés, and traditional pubs, catering to every taste.

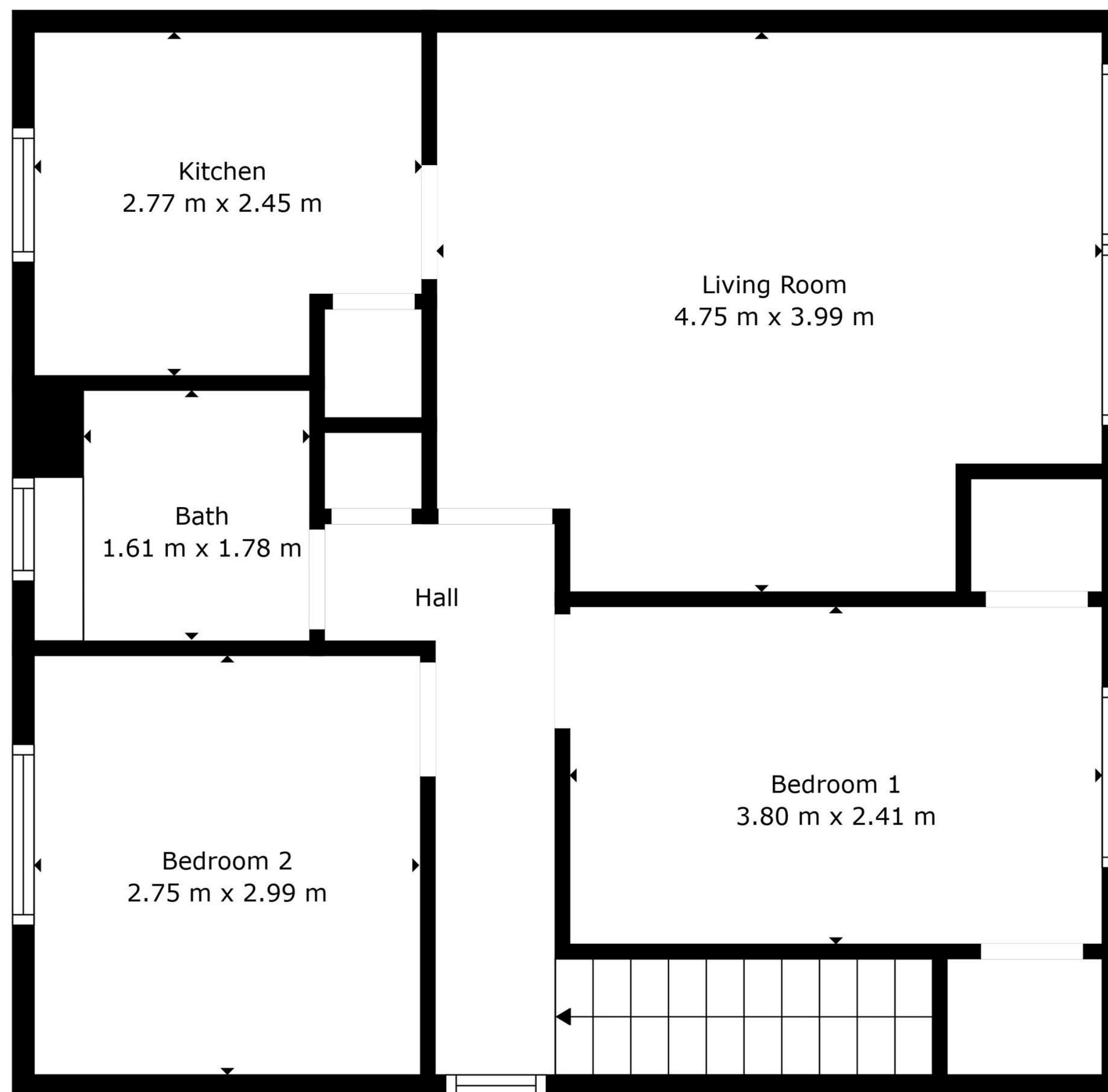
Dunfermline is exceptionally well-connected, with frequent rail services to Edinburgh (just 30 minutes away) and easy access to the M90, ensuring swift travel to Glasgow, Perth, and beyond. For international travel, Edinburgh Airport is a short drive away with Park and Ride facilities at Halbeath and Inverkeithing.

Whether you're looking for a bustling community, excellent transport links, or green spaces, Dunfermline offers a quality of life that's hard to beat.





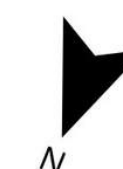
Floor 1



Floor 2



Floor Plan Created By Cubicasa App. Measurements Deemed Highly Reliable But Not Guaranteed.



Floorplans are for illustrative purposes only. Measurements are deemed highly reliable but not guaranteed.

Enquiries

 01383 629720

 info@maloco.co.uk

 maloco.co.uk

