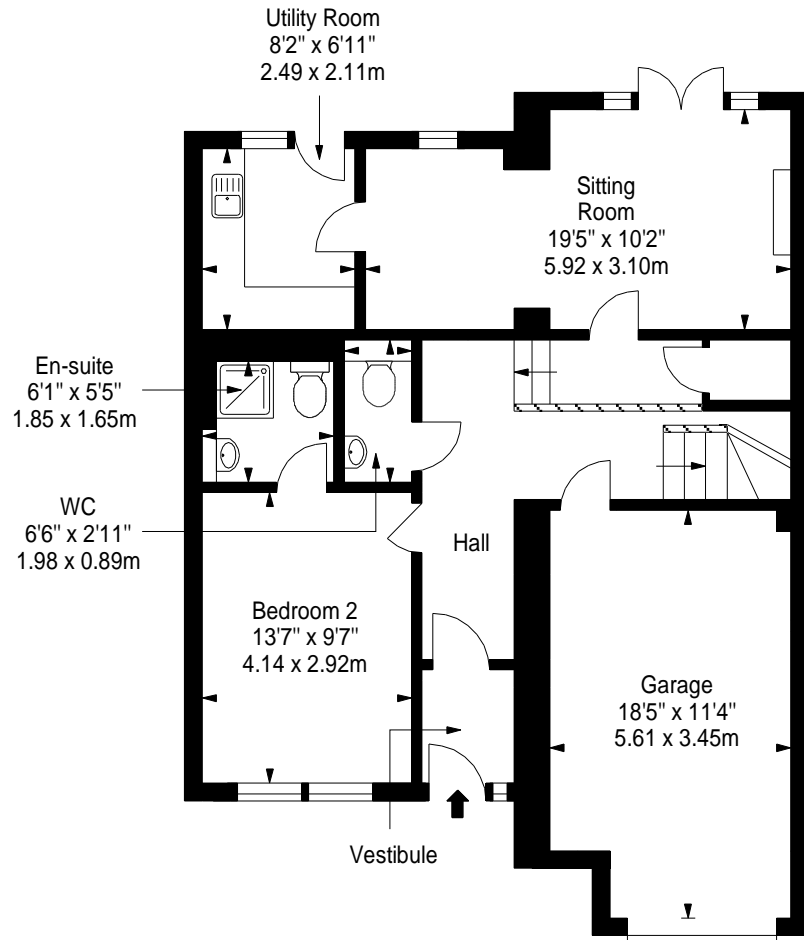
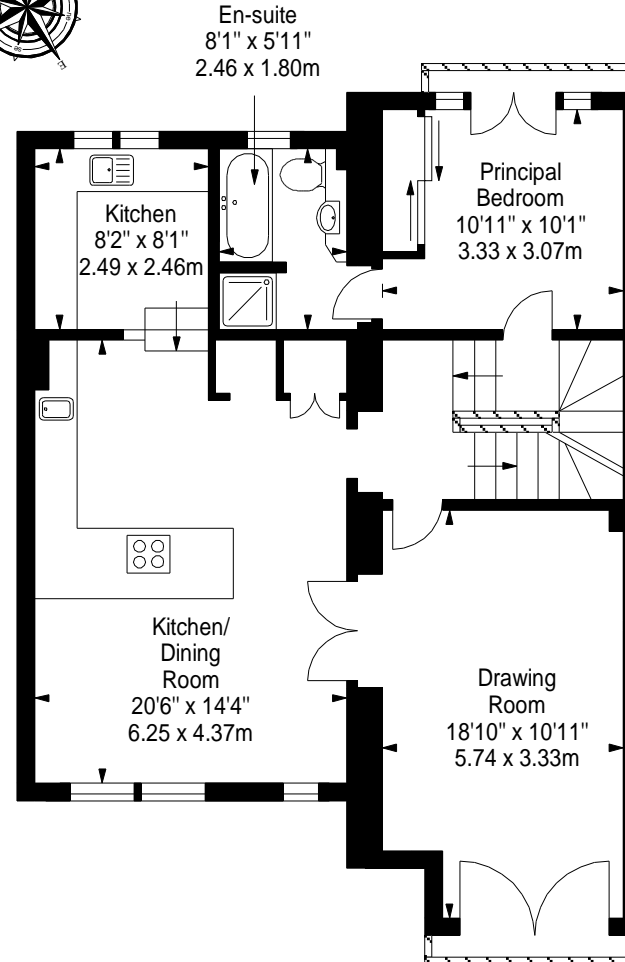


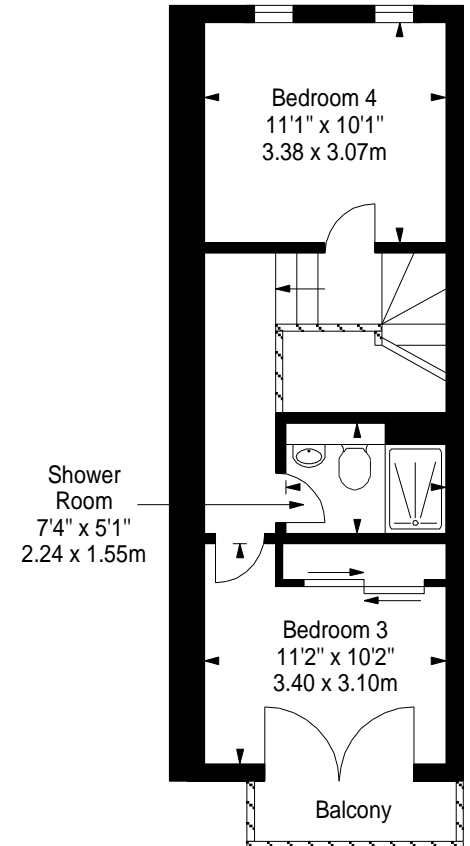
**Ground Floor**  
 Approx. 80.3 sq. metres (864.3 sq. feet)



**First Floor**  
 Approx. 80.3 sq. metres (864.3 sq. feet)



**Second Floor**  
 Approx. 33.9 sq. metres (365.4 sq. feet)



Total area: approx. 194.5 sq. metres (2094.0 sq. feet)