



# Ground Floor Flat

20 Springvale Street, Saltcoats, KA21 5LP



[taylorandhenderson.co.uk](http://taylorandhenderson.co.uk)

|   |  |   |  |   |  |   |                      |
|---|--|---|--|---|--|---|----------------------|
| 1 |  | 1 |  | 1 |  | D | <b>EPC</b><br>rating |
|---|--|---|--|---|--|---|----------------------|

## 20 Springvale Street

Taylor and Henderson are delighted to bring to the market this ground floor flat located within an extremely popular established residential locale walking distance of all Town Centre amenities to include shops, beach, and bus routes and train station. The accommodation comprises hallway, spacious lounge and kitchen area, double bedroom and shower room. Features include new double glazing and gas central heating. There is an enclosed shared rear garden mainly laid with lawn and a drying green Saltcoats and nearby Ardrossan offer a range of local amenities including beach, local shops, supermarkets, restaurants, schools, train stations and bus services. There is a regular ferry service to the Isle of Arran from Ardrossan. A new ferry service also provides a summer service to the Kintyre peninsula. This property is conveniently situated for all local amenities including road and regular rail links to Glasgow and all West Coast towns and thus is well located for travel throughout West Central Scotland.

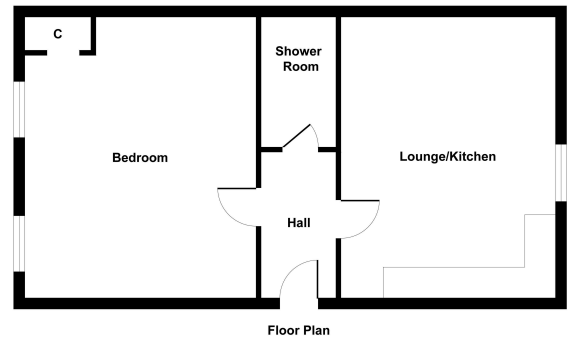
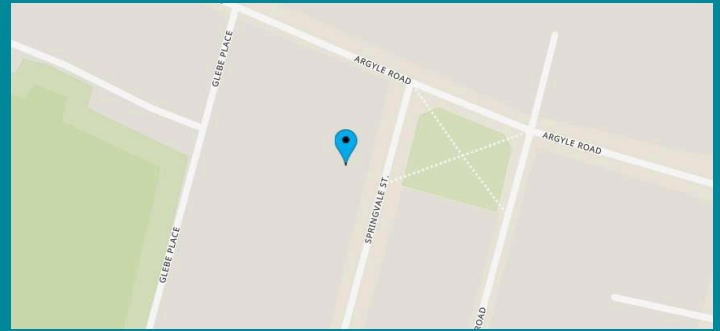


Illustration for identification purposes only, measurements are approximate, not to scale.  
Produced by Elements Property

Viewing  
Through solicitors on 01294 606700

Email  
[property@taylorandhenderson.co.uk](mailto:property@taylorandhenderson.co.uk)

Reference E489425

|                     |             |
|---------------------|-------------|
| Lounge Kitchen Area | 15'0 x 12'6 |
| Bedroom 1           | 14'9 x 12'5 |
| Shower Room         | 8'6 x 3'8   |



DISCLAIMER: Whilst we endeavour to make these particulars as accurate as possible, they do not form part of any contract of offer, nor are they guaranteed. Measurements are approximate and in most cases are taken with a digital/sonic-measuring device and are taken to the widest point. We have not tested the electricity, gas or water services or any appliances. Photographs are reproduced for general information and it must not be inferred that any item is included for sale with the property. If there is any part of this that you find misleading or simply wish clarification on any point, please contact our office immediately when we will endeavour to assist you in any way possible.