




23 Cadwell Crescent, Gorebridge, Midlothian, EH23 4NF

Beautifully Presented, Two-Bedroom, Semi-Detached Home with Gardens & Parking Space

Up to date price and viewing info at [mov8realestate.com/property](https://www.mov8realestate.com/property)

espc rightmove  Zoopla
find your happy

Property Description

Beautifully presented, two-bedroom, modern, semi-detached house, with gardens and an allocated parking space. Set in a family-oriented development in Gorebridge, Midlothian, this attractive home offers modern living, ideal for first-time buyers, young families, and those looking to downsize.

Comprises an entrance hallway, a living/dining room, a kitchen, two double bedrooms, a family bathroom, and a ground-floor WC.

Ready-to-move-in, with a fully integrated kitchen, modern bathrooms, and light, tasteful decor. Additionally, the property features HIVE gas central heating, double glazing, contemporary flooring, and ample storage.

Externally, the property boasts raised planting beds to the front, and a rear garden featuring a lawn, patios, and a store shed. This popular, well-maintained development also has unrestricted street parking and visitors' spaces, together with well-kept communal areas and open green spaces.

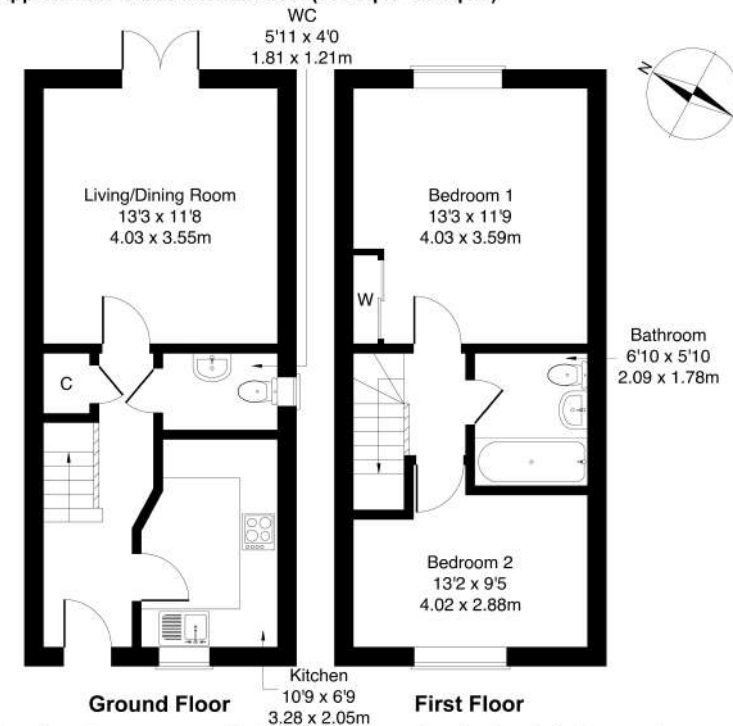
The welcoming entrance hall provides access throughout the ground floor and includes a convenient WC and useful under-stair storage. To the rear of the property, the stylish living room is finished in light neutral decor with wood-effect flooring and features two pendant light fittings along with patio doors opening directly onto the garden, creating a bright and inviting living space. To the front, the contemporary kitchen is fitted with modern units, wood-effect worktops with matching upstands, tiled splashbacks and a sink with a drainer and a pull-out spray tap. Integrated appliances include an oven, gas hob with extractor hood, fridge/freezer, dishwasher and washing machine.

Upstairs, the generous principal bedroom overlooks the rear garden and benefits from neutral decor, carpeted flooring and a built-in wardrobe with two mirrored doors. A second well-proportioned double bedroom is positioned to the front, also finished with carpeted flooring. Completing the accommodation is a family-sized bathroom fitted with a three-piece suite including a shower over the bath, tiled splash walls and a ladder-style radiator.



23 Cadwell Crescent, Gorebridge, EH23 4NF

Approximate Gross Internal Area: (700 sq ft - 65 sq m.)



Legal Disclaimer : Floor-plan and measurements are for illustrative guidance only, and not intended to form part of any contract.

Area Description

Gorebridge is a well-established and growing rural village in Midlothian, situated around 10 miles southeast of Edinburgh and popular with commuters. The village offers a diverse range of amenities along its main street, including a supermarket, leisure and recreational facilities, and five primary schools, with the highly regarded Newbattle High School serving as the local secondary school. The nearby town of Dalkeith

offers a broader selection of services, while Straiton Retail Park features major retailers such as Sainsbury's, Boots, M&S Food, and one of only two IKEA stores in Scotland. Excellent transport links include regular bus services, a Borders Railway station in the village, and easy access to the A7, connecting quickly to the city bypass and motorway network.





Our Services

- Free pre-sale property valuations
- Great value fixed estate agency fees
- Extensive buyer matching database
- Purchase and sale conveyancing

Contact Us

0345 646 0208

sales@mov8realestate.com

www.mov8.com

Head Office

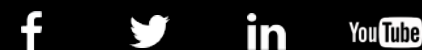
6 Redheughs Rigg, Edinburgh, EH12 9DQ

Glasgow Office

77 Renfrew Street, Glasgow, G2 3BZ



Estate Agents and Solicitors



These particulars do not form part of any contract and the statements or plans contained herein are not warranted nor are they to scale. All descriptions, dimensions, areas, reference to condition and necessary permissions for use and occupation and other details are given in good faith, and are believed to be correct, but any prospective purchaser should not rely on them as statements or representations of fact, and any prospective purchaser must satisfy themselves by inspection or otherwise as to the correctness of each of them. The Seller shall not be bound to accept the highest or any offer nor to accept a full offer of the Fixed Price where this is applicable. Approximate measurements have been taken by sonic device and measurements are most often taken to the widest point of any room or space. Services and appliances have not been tested for efficiency or safety and no warranty is given as to their compliance with any Regulations. Offers should be made using the Combined Standard Clauses.