

27 Afton Road, New Cumnock, KA18 4NE

Offers Over £120,000



Spacious semi-detached two bedroom bungalow benefiting from gas central heating, double glazing, off street parking and large garden.

Situated in New Cumnock which has a selection of amenities all within easy reach, a fantastic outdoor swimming pool, train station and everyday amenities, including shops and supermarkets are available a short distance away in the larger town of Cumnock.



POLLOCK & MCLEAN
SOLICITORS FOR YOU AND YOUR FAMILY



WWW.POLLOCKMCLEAN.CO.UK

Pollock & McLean
41 Castle Street
Dumfries
DG1 1DU
01387 255414



Measurements (all approx.)

Entrance vestibule – 1.19m x 0.98m
 Bedroom 1- 3.69m x 3.69m

Living Room – 4.35m x 3.68m
 Bedroom 2 – 3.67m x 3.22m

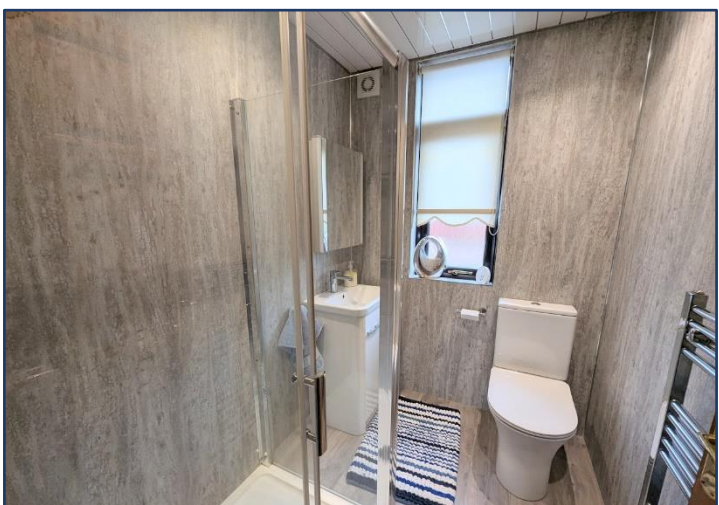
Kitchen – 3.97m x 3.21m
 Shower Room – 1.96m x 1.54m



These particulars have been carefully prepared by Messrs Pollock & McLean, Solicitors and Estate Agents. Although believed to be correct they are not guaranteed and therefore prospective purchasers should satisfy themselves as to the basic facts before submitting an offer. All photographs have been taken using a wide angled lens



- Entrance vestibule with door to hallway. Hallway with built-in cupboard with shelves. Loft hatch with ladder. Doors to living room, shower room and two bedrooms.
- Bright Living room with window to front with great views over open countryside views. Electric fire (currently not working) with wooden mantle.
- Spacious kitchen/diner with wall and base units. Integrated electric oven and hob. Integrated fridge and freezer. Sink with mixer tap and right hand drainer. Window to rear and door to side.
- Bedroom one which is a good size with window to front with great views over open countryside. Built-in cupboard with shelves.
- Bedroom two is a double bedroom with window to rear. Fitted cupboard with coat hooks and shelf.
- Modern fitted shower room with Thermostatic mixed shower. W. C., wash hand basin with mixer tap and storage. Heated towel rail. Fully splashback. Window to rear.
- Good size rear garden which is easily maintained. Outside tap, shed and clothes poles.
- Front has off street parking for two cars.





View from property.